



Manual revision June 17

Manual

Installation, Operation & Maintenance

FOR FOLDING SLIDING DOORS



The Folding Sliding Door Company

FSD Works, Hopbine Avenue, West Bowling, Bradford, West Yorkshire BD5 8ER

www.foldingslidingdoors.com

Thank you for purchasing your folding sliding door from
The Folding Sliding Door Company.

This is probably one of the largest, most important investments you have ever made and we wish you many years of enjoyment.

We have designed this operating manual to assist you during and after the installation of your folding sliding doors.

The information presented within will answer many questions and prepare you for each step of your installation making this exciting time easier.

Our aim is to provide you with complete, accurate information regarding your folding sliding doors.

The following information will aid in caring for your purchase in the event you should need repairs or have a service issue, instructions are given to help you through the processes.

This manual provides you with in-depth descriptions of the warranty, maintenance guidelines, aftercare and instructions, familiarise yourself with these.

We are delighted that you chose to purchase our products and are always ready to serve you.

Contents

Operating instructions

Folding sliding doors	4
Locking	6

Installation

Quick installation instructions	8
Door breakdown / components	10
Top track fixing options	14
Cill options	14
Adjusting the roller	15
Installing a pull handle	15
Resetting a shoot bolt	16
Toe & heeling the glass	17
How to glaze using a Wedge Gasket ..	18

Encapsulated Blinds

User guide / trouble shooting	19
-------------------------------------	----

Cleaning

Glass	20
Panels & door frame	20
Tracks	20
Rollers	20

General maintenance

Glass scratches	20
PVCu profiles	20
Gaskets	20
Hardware fittings	20
Handles	20
Silicone seals	20

Condensation

Causes & cures	21
----------------------	----

Timber maintenance

Maintenance guidelines	22
Problem Areas	23
Applying water based paints	23
Maintaining Oak	24
Open joints and gaps	24
Removing discolouration	25

Guide to viewing glass

GGF guide to viewing glass	26
----------------------------------	----

Guarantee

Warranty Terms and Conditions	27
-------------------------------------	----



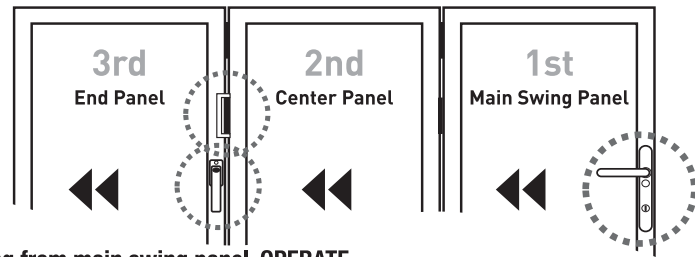
Require further assistance?, please contact
customer services
www.foldingslidingdoors.com or telephone 0845 644 6630



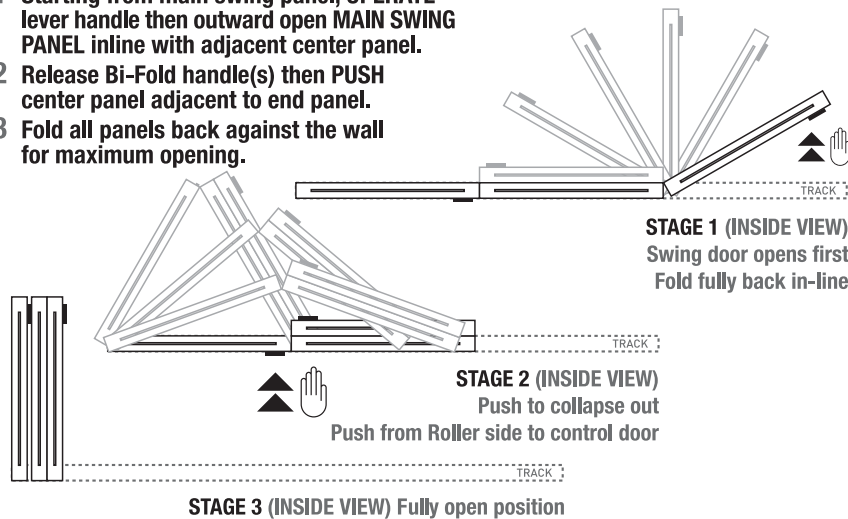
How to operate (folding)

LEFT HAND STACKING OUTWARD OPENING

****Important; Remove keys prior to folding open****

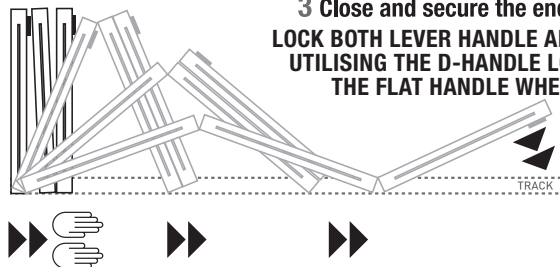


- 1 Starting from main swing panel, OPERATE lever handle then outward open MAIN SWING PANEL inline with adjacent center panel.
- 2 Release Bi-Fold handle(s) then PUSH center panel adjacent to end panel.
- 3 Fold all panels back against the wall for maximum opening.



HOW TO CLOSE YOUR BI-FOLD DOOR

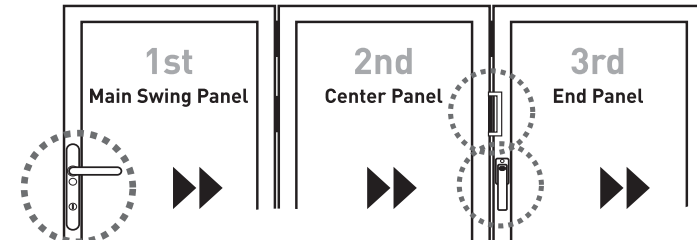
- 1 Hold panels 2 & 3 and walk in the direction of the track
 - 2 The rollers are utilised giving a smooth closure to the bi-fold door
 - 3 Close and secure the end swing panel.
- LOCK BOTH LEVER HANDLE AND FLAT HANDLE UTILISING THE D-HANDLE LOCATED ABOVE THE FLAT HANDLE WHEN CLOSING**



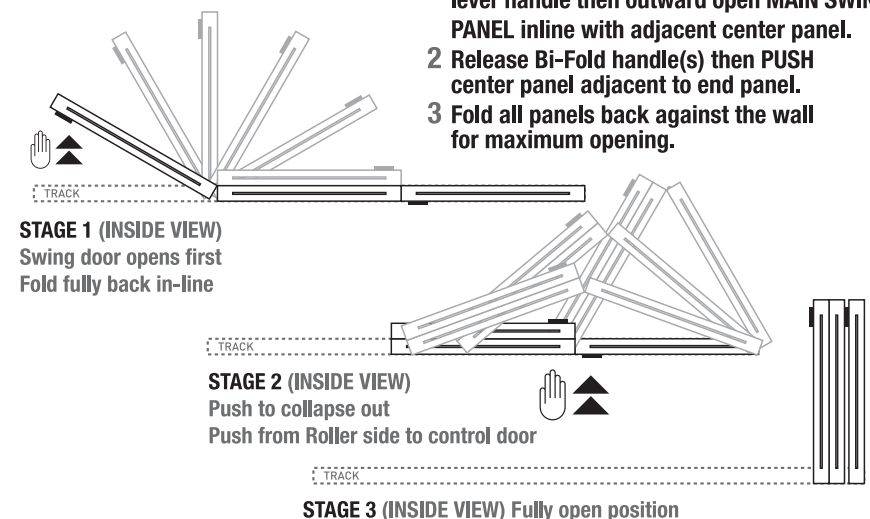
How to operate (folding)

RIGHT HAND STACKING OUTWARD OPENING

****Important; Remove keys prior to folding open****

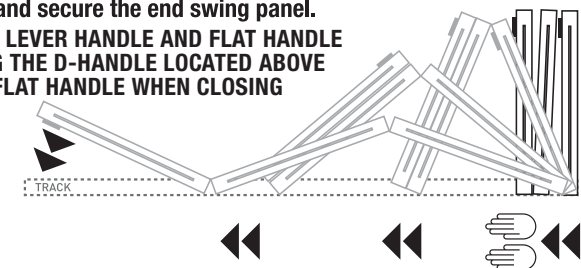


- 1 Starting from main swing panel, OPERATE lever handle then outward open MAIN SWING PANEL inline with adjacent center panel.
- 2 Release Bi-Fold handle(s) then PUSH center panel adjacent to end panel.
- 3 Fold all panels back against the wall for maximum opening.



HOW TO CLOSE YOUR BI-FOLD DOOR

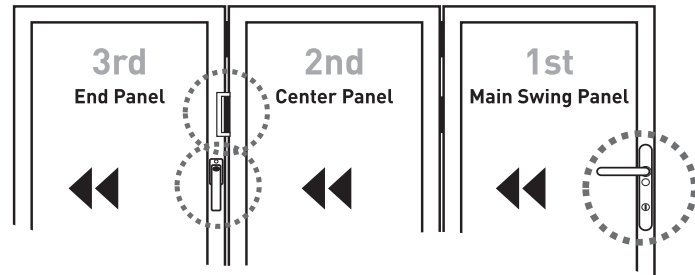
- 1 Hold panels 2 & 3 and walk in the direction of the track
 - 2 The rollers are utilised giving a smooth closure to the bi-fold door
 - 3 Close and secure the end swing panel.
- LOCK BOTH LEVER HANDLE AND FLAT HANDLE UTILISING THE D-HANDLE LOCATED ABOVE THE FLAT HANDLE WHEN CLOSING**



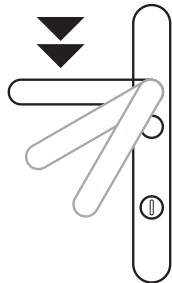
How to operate (locking)

LEFT HAND STACKING OUTWARD OPENING

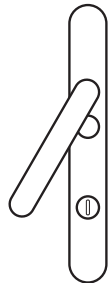
****Important; Remove keys prior to folding open****



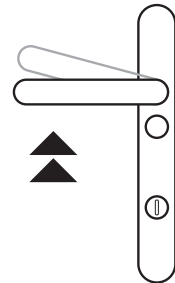
HOW TO OPERATE YOUR LEVER HANDLE



1. To Open
Use key, depress handle to dis-engage locks



2. To Open
Keep handle depressed Push to outward open

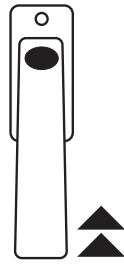


3. Lock(ing) position
Lift handle slightly to engage locks, use key

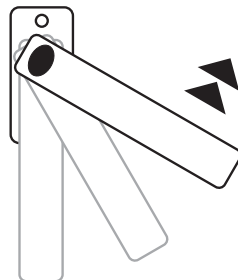
HOW TO OPERATE YOUR BI-FOLD HANDLE



Locked position
180 Degrees Flat



To Open
Lift handle up

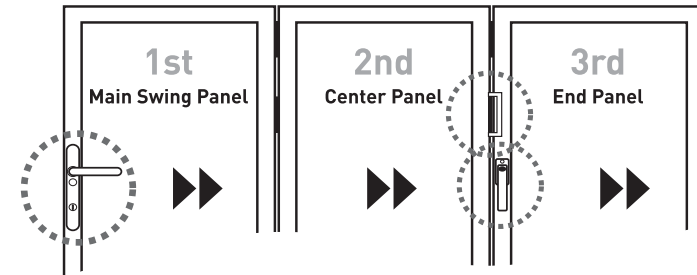


Turn handle anti-clockwise to disengage locks (45 Degrees) and push out to open outward opening doors. Locking of the handle is a reversal of this procedure, but pull inward to close, ensuring D-handles are utilised to take the strain.

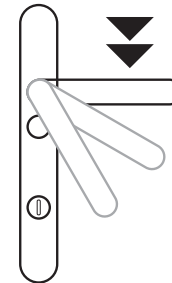
How to operate (locking)

RIGHT HAND STACKING OUTWARD OPENING

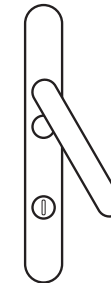
****Important; Remove keys prior to folding open****



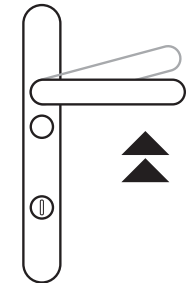
HOW TO OPERATE YOUR LEVER HANDLE



1. To Open
Use key, depress handle to dis-engage locks



2. To Open
Keep handle depressed Push to outward open

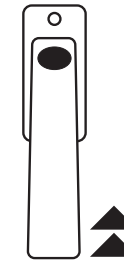


3. Lock(ing) position
Lift handle slightly to engage locks, use key

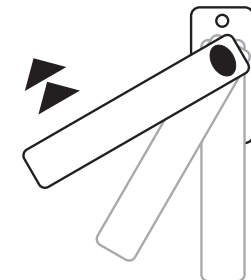
HOW TO OPERATE YOUR BI-FOLD HANDLE



Locked position
180 Degrees Flat



To Open
Lift handle up



Turn handle clockwise to disengage locks (45 Degrees) and push out to open outward opening doors. Locking of the handle is a reversal of this procedure, but pull inward to close, ensuring D-handles are utilised to take the strain.

Quick installation guide



1: THE BOTTOM TRACK is the most critical step. Ensure the track is fixed firm and level in both directions. For longer tracks you may require a laser level. Pre-drill the track 100mm from each end and then 500mm apart. The track port is positioned at the stacking side.



2: FIX THE 1ST JAMB is the one that the door is to stack open against. Ensure the jamb is fixed square on the track and level on both faces. This jamb must be firmly fixed to the wall to carry the weight of the door. Thermalite, breeze block or cavity fixed jamb must be firmly strapped to ensure no side to side or rocking movement.



3: TOP TRACK Position the top track on top of the jamb and position, place the other jamb under the top track to hold it in place. If practically possible, do not fix the top track at this stage.



4: FIX THE 2ND JAMB Ensure the second jamb is fixed square on the track and level on both faces. This jamb must be firmly fixed to the wall to carry the weight of the door. Thermalite, breeze block or cavity fixed jamb must be firmly strapped to ensure no side to side or rocking movement.



5: FIX THE TOP TRACK Ensure the top track is fixed firm and level in both directions. For longer tracks you may require a laser level. Pre-drill the track 100mm from each end and then 500mm apart. The track port is positioned at the stacking side.



6: SETTING THE ROLLERS Remove the top and bottom hinges from the connecting edge of the 2nd and 3rd (and 4th & 5th if applicable) panel and attach them to the rollers. Set the rollers by winding the bottom Allen bolt to 32mm for the bottom roller and 35mm for the top. The measurement is taken from the top of the black carrier to the underside of the T on the roller.



7: ROLLERS Insert all the rollers into the tracks. Ensure the hinge is positioned on the right side.



8: LOCATE FIRST PANEL Lift the first panel into position. We recommend that two persons lift the panels. For easy positioning, place timber on the floor so that the top of the timber is 10mm higher than the top of the bottom track. Lift the panel onto the timber. Locate the hinges and fix to the first jamb. Check the panel for parallel positioning and clearance with the tracks.



9: CYLINDER POSITION Insert the half cylinder with the keys in. Rotate the keys to position the cylinder accurately into the lock. Insert the fixing bolt and tighten. Be careful not to over tighten the fixing bolt. Mark, pre-drill and screw on the cylinder cover.



10: FIX HANDLE(S) Insert the shorter square bar into the lock. The bar should project no more than 5mm from the face of the panel. Mark, pre-drill and screw on the handle with the lever facing down.



11: FIX THE PANEL(S) Using the same method as the first panel, fix the second panel. Slide the top and bottom roller onto the panel, position and fix. Check the panel for parallel positioning and clearance with the tracks. Adjustment to the rollers may be required at this stage. Note: For 4, 5 and 6 panel door sets, repeat steps 8, 9, 10 and 11. For 2, 4, or 6 panels folding in one direction, a solid hinge is attached to the top and bottom roller of the last panel.



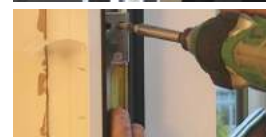
12: SWING DOOR Attach the swing panel.



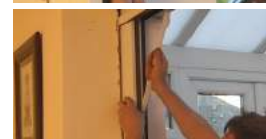
13: LOCATE THE CYLINDER Insert the full cylinder with the keys in. Rotate the keys to position the cylinder accurately into the lock. Insert the fixing bolt and tighten. Be careful not to over tighten the fixing bolt. Mark, pre-drill and screw on the cylinder covers.



14: LOCATE THE HANDLE Insert the longer square bar into the lock. The bar should project no more than 5mm from the face of the panel. Mark, pre-drill and screw on the handle with the lever facing horizontally.



15: LOCATOR BOLTS Open the door and lock the swing panel into the track. Slide the door closed so that it is positioned 50mm from the closing jamb. Using masking tape, mark the position of the bolts. Mark, pre-drill and screw on the keeps in accordance to your bolt markings.



16: FIT COVERS Cut to size and clip in the fixing covers into the jambs.



17: SEAL THE DOORS Seal around frame & remove the protective tape.

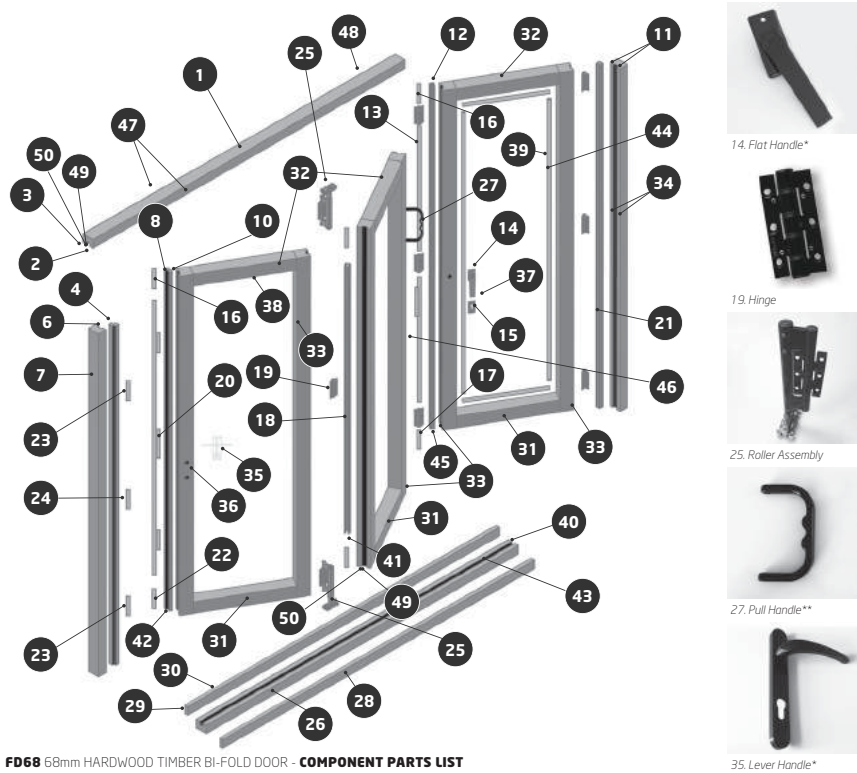


18: DRIP CLIPS Clip the drip caps into the slots on the outside of the panels.

Typical components

FD68 Engineered Hardwood Timber Bi-Folding Door

Exploded view illustrating the typical components of a folding sliding door



FD68 68mm HARDWOOD TIMBER BI-FOLD DOOR - COMPONENT PARTS LIST

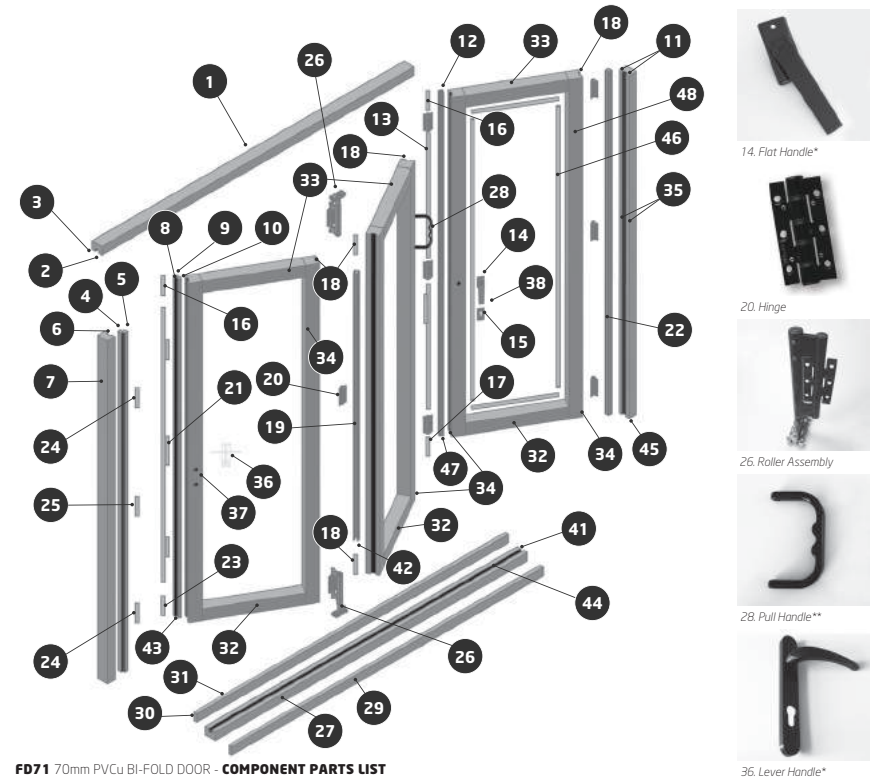
NUMBER	DESCRIPTION	PRODUCT CODE	NUMBER	DESCRIPTION	PRODUCT CODE
01	TOP TRACK	7001	26	BOTTOM TRACK (CILL OR NO CILL)	7001SA/B
02	TOP TRACK BRUSH SEAL	FSTB48B	27	PULL HANDLE*	FSPHB
03	TOP TRACK REBATE GASKET	FSRG135B	28	CILL EXTENSION / TRACK COVER	6819
04	JAMB CLOSER	6890	29	BOTTOM TRACK REBATE	7003
05	N/A		30	BOTTOM TRACK REBATE GASKET	FSRG135B
06	JAMB CLOSER FLIPPER GASKET	FSTFG8	31	PANEL BOTTOM BRUSHSEAL	FSPB48B
07	JAMB	6810	32	STYLE / RAIL	6802
08	PANEL CLOSER	6890	33	PANEL BUBBLE GASKET	FSTBGB
09	N/A		34	JAMB BUBBLE GASKET	FSTBGB
10	PANEL CLOSER FLIPPER GASKET	FSTFG8	35	LEVER HANDLE*	FSLH
11	JAMB	7203R	36	FULL CYLINDER	FS0500AB
12	LOCK STYLE TONGUE	6891	37	HALF CYLINDER	FSDC4510
13	2 POINT LOCK	FS2PL35 (Doc Q FS2PL350)	38	PANEL GLAZING GASKET	5154B
14	FLAT HANDLE*	FSFH	39	GLAZING BEAD GASKET	5154B
15	CYLINDER GUARD	FSCG	40	TRACK END CAP	FSI7001TC
16	REVERSE ACTION SHOOTBOLT	FSRASB230	41	ROLLER TONGUE END CAP	FSI7211TCB
17	NORMAL ACTION SHOOTBOLT(230MM)	FSNASB230	42	CLOSER END CAP	FSI7210LRCC
18	ROLLER TONGUE	6891	43	TRACKPORT COVER	FSI7001TPC
19	HINGE*	FSFH5	44	GLAZING BEAD	6816
20	5 POINT LOCK	FS5PL	45	SHOOT BOLT TONGUE END CAP	FSI7211TSCV2
21	JAMB TONGUE	6891	46	PANEL KEEP	Doc Q FSDCOHK
22	NORMAL ACTION SHOOTBOLT	FSNASB100/FSNASB230	47	TRACK COVER	6819
23	HOOK KEEPS	FSDHK	48	TOP TRACK REBATE	7003
24	CENTRE KEEP LH/RH	FSL/RHCK	49	BRUSHSEAL CARRIER	FS118B
25	ROLLER ASSEMBLY*	FS70RAB	50	BRUSHSEAL	FSTB48B

* Hardware available in White / Black / Gold / Chrome / Satin Nickel / Stainless Steel ** Hardware available in White / Black / Satin Nickel / Stainless Steel (Doc Q code replaces standard product code for Document Q compliant bi-fold door option)

Typical components

FD71 PVCu Bi-Folding Door

Exploded view illustrating the typical components of a folding sliding door



FD71 70mm PVCu BI-FOLD DOOR - COMPONENT PARTS LIST

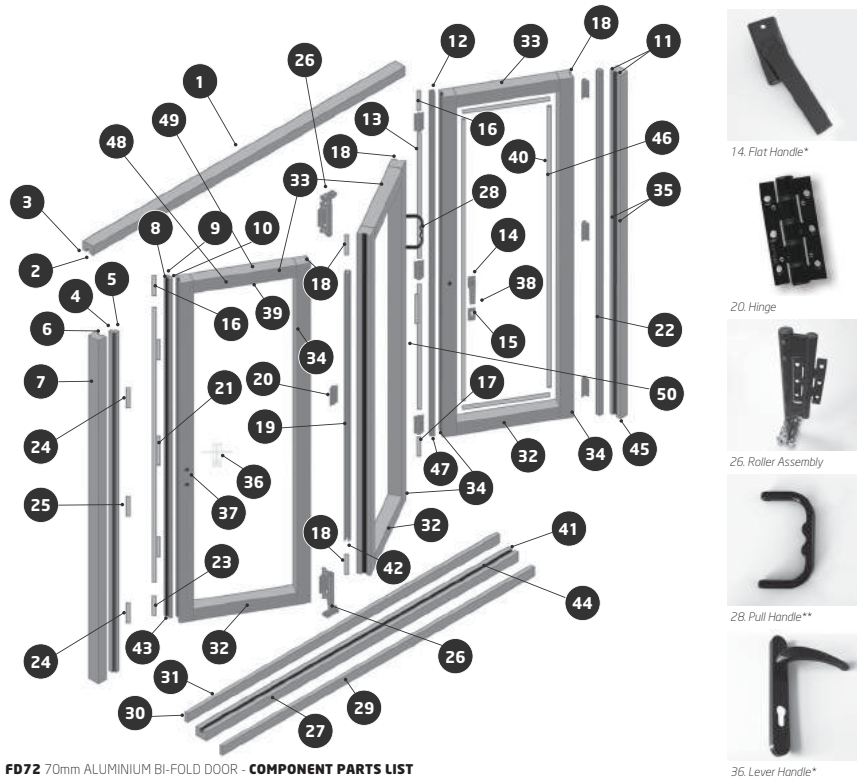
NUMBER	DESCRIPTION	PRODUCT CODE	NUMBER	DESCRIPTION	PRODUCT CODE
01	TOP TRACK	7202	26	ROLLER ASSEMBLY*	FS70RAB
02	TOP TRACK BRUSH SEAL	FSTB67B	27	BOTTOM TRACK (CILL OR NO CILL)	7001SA/B
03	TOP TRACK REBATE GASKET	FSRG135B	28	PULL HANDLE*	FSPHB
04	JAMB CLOSER	7210R	29	CILL EXTENSION	7206
05	JAMB CLOSER REBATE GASKET	FSRG135B	30	BOTTOM TRACK REBATE	7003
06	JAMB CLOSER FLIPPER GASKET	FSAFGB	31	BOTTOM TRACK REBATE GASKET	FSRG135B
07	JAMB	114202100100 (VEKA)	32	PANEL BOTTOM BRUSHSEAL	FSPB48B
08	PANEL CLOSER	7210R	33	STYLE / RAIL	101161900002
09	PANEL CLOSER REBATE GASKET	FSRG135B	34	PANEL BUBBLE GASKET	FSAU8GB
10	PANEL CLOSER FLIPPER GASKET	FSAFGB	35	JAMB BUBBLE GASKET	FSAU8GB
11	JAMB	114202100100 (VEKA)	36	LEVER HANDLE*	FSLH
12	LOCK STYLE TONGUE	7211	37	FULL CYLINDER	FS0500AB
13	2 POINT LOCK	FS2PL35	38	HALF CYLINDER	FSDC4510
14	FLAT HANDLE*	FSFH	39	N/A	
15	CYLINDER GUARD	FSCG	40	N/A	
16	REVERSE ACTION SHOOTBOLT	FSRASB230	41	TRACK END CAP	FSI7001TC
17	NORMAL ACTION SHOOTBOLT(230MM)	FSNASB230	42	ROLLER TONGUE END CAP	FSI7211TCB
18	N/A		43	CLOSER END CAP	FSI7210LRCC
19	ROLLER TONGUE	7211	44	TRACKPORT COVER	FSI7001TPC
20	HINGE*	FSFH5	45	JAMB TENON INSERT	FSI7203VKJI
21	5 POINT LOCK	FS5PL	46	GLAZING BEAD	107155100140 (VEKA)
22	JAMB TONGUE	7211	47	SHOOT BOLT TONGUE END CAP	FSI7211TSCV2
23	NORMAL ACTION SHOOTBOLT	FSNASB100/FSNASB230	48	HINGE REINFORCEMENT	1168
24	HOOK KEEPS	FSDHK			
25	CENTRE KEEP LH/RH	FSL/RHCK			

* Hardware available in White / Black / Gold / Chrome / Satin Nickel / Stainless Steel ** Hardware available in White / Black / Satin Nickel / Stainless Steel

Typical components

FD72 Aluminium Bi-Folding Door

Exploded view illustrating the typical components of a folding sliding door



FD72 70mm ALUMINIUM BI-FOLD DOOR - COMPONENT PARTS LIST

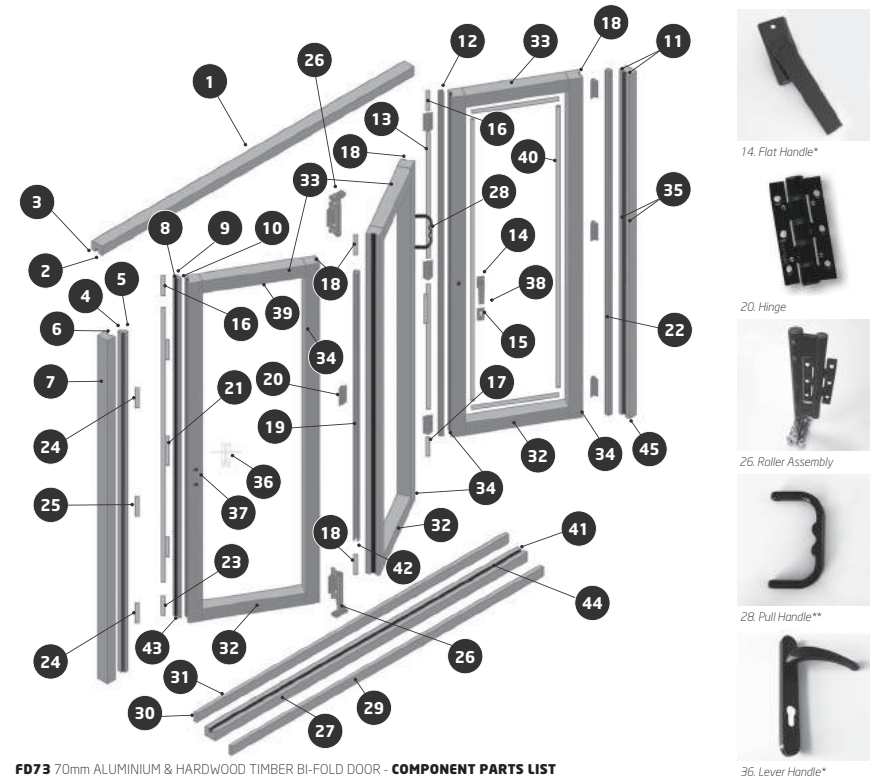
NUMBER	DESCRIPTION	PRODUCT CODE	NUMBER	DESCRIPTION	PRODUCT CODE
01	TOP TRACK	7202	26	ROLLER ASSEMBLY*	FS70RAB
02	TOP TRACK BRUSH SEAL	FSTB67B	27	BOTTOM TRACK (CILL OR NO CILL)	7001SA/B
03	TOP TRACK REBATE GASKET	FSRG135B	28	PULL HANDLE*	FSPHB
04	JAMB CLOSER	7210R	29	CILL EXTENSION	7206
05	JAMB CLOSER REBATE GASKET	FSRG135B	30	BOTTOM TRACK REBATE GASKET	FSRG135B
06	JAMB CLOSER FLIPPER GASKET	FSAFGB	31	BOTTOM TRACK REBATE GASKET	FSRG135B
07	JAMB	7203R	32	PANEL BOTTOM BRUSHSEAL	FSPB48B
08	PANEL CLOSER	7210R	33	STYLE / RAIL	7201R (Doc Q 7201HD)
09	PANEL CLOSER REBATE GASKET	FSRG135B	34	PANEL BUBBLE GASKET	FSaubGB
10	PANEL CLOSER FLIPPER GASKET	FSAFGB	35	JAMB BUBBLE GASKET	FSaubGB
11	JAMB	7203R	36	LEVER HANDLE*	FSLH
12	LOCK STYLE TONGUE	7211 (Doc Q 1191)	37	FULL CYLINDER	FSS050AB
13	2 POINT LOCK	FS2PL35 (Doc Q FS2PL350)	38	HALF CYLINDER	FSDC4510
14	FLAT HANDLE*	FSFH	39	PANEL GLAZING GASKET	FSPG731B (Doc Q 732B)
15	CYLINDER GUARD	FSGC	40	GLAZING BEAD GASKET	FSBG32B
16	REVERSE ACTION SHOOTBOLT	FSRASB230	41	TRACK END CAP	FSI7001TC
17	NORMAL ACTION SHOOTBOLT(230MM)	FSNASB230	42	ROLLER TONGUE END CAP	FSI7211TCB
18	N/A		43	CLOSER END CAP	FSI7210LRCC
19	ROLLER TONGUE	7211	44	TRACKPORT COVER	FSI7001TPC
20	HINGE*	FSFH5	45	JAMB TENON INSERT	FSI7203JI
21	5 POINT LOCK	FS5PL	46	GLAZING BEAD	7208R (Doc Q 7208HD)
22	JAMB TONGUE	7211	47	SHOOT BOLT TONGUE END CAP	FSI7211TSCV2
23	NORMAL ACTION SHOOTBOLT	FSNASB100/FSNASB230	48	PANEL REBATE	(Doc Q FSD1045)
24	HOOK KEEPS	FSDHK	49	PANEL REBATE GASKET	(Doc Q FSRG135B)
25	CENTRE KEEP LH/RH	FSLRHCK	50	PANEL KEEP	(Doc Q FSDCOHK)

* Hardware available in White / Black / Gold / Chrome / Satin Nickel / Stainless Steel ** Hardware available in White / Black / Satin Nickel / Stainless Steel (Doc Q code replaces standard product code for Document Q compliant bi-fold door option)

Typical components

FD73 Aluminium/Timber (Ali-Clad) Bi-Folding Door

Exploded view illustrating the typical components of a folding sliding door



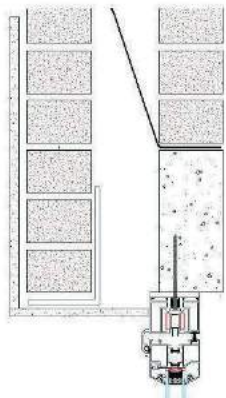
FD73 70mm ALUMINIUM & HARDWOOD TIMBER BI-FOLD DOOR - COMPONENT PARTS LIST

NUMBER	DESCRIPTION	PRODUCT CODE	NUMBER	DESCRIPTION	PRODUCT CODE
01	TOP TRACK	7202	26	ROLLER ASSEMBLY*	FS70RAB
02	TOP TRACK BRUSH SEAL	FSTB67B	27	BOTTOM TRACK	7001SA/B
03	TOP TRACK REBATE GASKET	FSRG135B	28	PULL HANDLE*	FSPHB
04	JAMB CLOSER	6890/7210R	29	CILL EXTENSION	7206
05	N/A		30	BOTTOM TRACK REBATE	7003
06	JAMB CLOSER FLIPPER GASKET	FSAFGB/FSTFGB	31	BOTTOM TRACK REBATE GASKET	FSRG135B
07	JAMB	7303	32	PANEL BOTTOM BRUSHSEAL	FSPB48B
08	PANEL CLOSER	6890/7210R	33	STYLE / RAIL	7301
09	PANEL CLOSER REBATE GASKET	FSRG135B	34	PANEL BUBBLE GASKET	FSaubGB/FSTBGB
10	PANEL CLOSER FLIPPER GASKET	FSAFGB/FSTFGB	35	JAMB BUBBLE GASKET	FSaubGB
11	JAMB	7303	36	LEVER HANDLE*	FSLH
12	LOCK STYLE TONGUE	7211	37	FULL CYLINDER	FSS050AB
13	2 POINT LOCK	FS2PL35	38	HALF CYLINDER	FSDC4510
14	FLAT HANDLE*	FSFH	39	PANEL GLAZING GASKET	FSPG731B
15	CYLINDER GUARD	FSGC	40	GLAZING BEAD GASKET	FSACCG
16	REVERSE ACTION SHOOTBOLT	FSRASB230	41	TRACK END CAP	FSI7001TC
17	NORMAL ACTION SHOOTBOLT(230MM)	FSNASB230	42	ROLLER TONGUE END CAP	FSI7211TCB
18	N/A		43	CLOSER END CAP	FSI7210LRCC
19	ROLLER TONGUE	7211	44	TRACKPORT COVER	FSI7001TPC
20	HINGE*	FSFH5	45	JAMB TENON INSERT	FSI7203JI
21	5 POINT LOCK	FS5PL	46		
22	JAMB TONGUE	7211	47		
23	NORMAL ACTION SHOOTBOLT	FSNASB100/FSNASB230	48		
24	HOOK KEEPS	FSDHK	49		
25	CENTRE KEEP LH/RH	FSLRHCK	50		

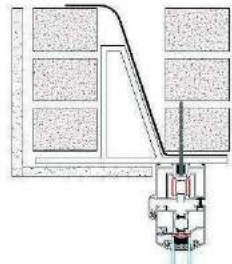
* Hardware available in White / Black / Gold / Chrome / Satin Nickel / Stainless Steel ** Hardware available in White / Black / Satin Nickel / Stainless Steel

Top track fixing details

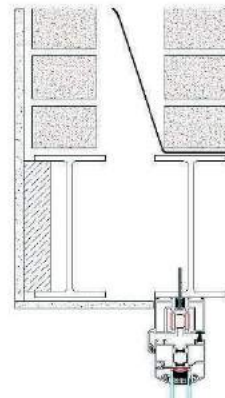
Recommended top track fixing details



Concrete or Timber Lintel



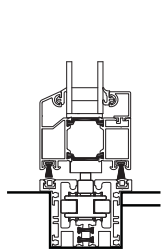
Catnic (with fixing screw fixed into the brick)



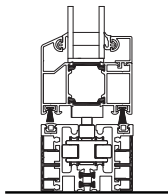
Re-reinforced Steel Joist

Cill options

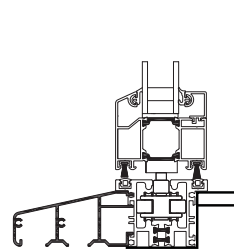
These cill options are example details and apply to all systems. Our aluminium system has been used for the purpose of illustration.



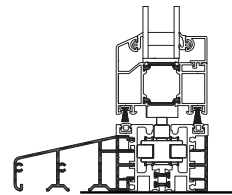
(1) Flush Track



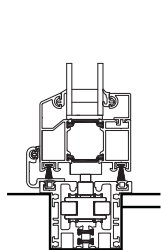
(2) Raised Track



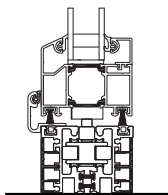
(3) Flush Track with sill



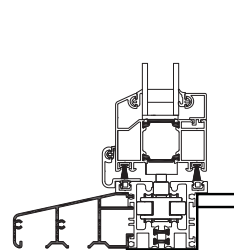
(4) Raised Track with sill



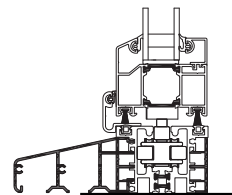
(5) Flush Track with rebate



(6) Raised Track with rebate

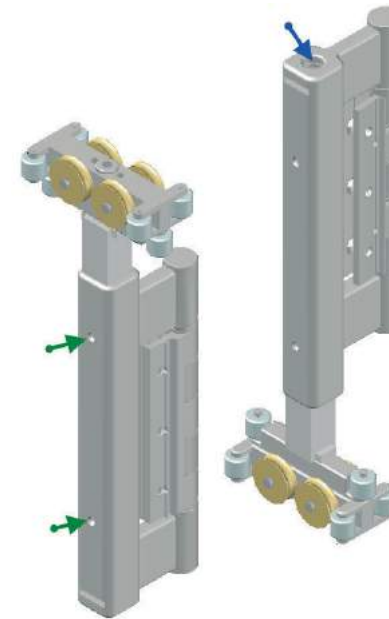


(7) Flush Track with sill with rebate



(8) Raised Track with sill with rebate

Adjusting a roller



This roller assembly has three grub screws.

The grub screw on the hinge is to lock the hinge in position and maintains high security, without it, the hinge is vulnerable to crime.

The grub screws on the roller carrier (green arrows) are to lock the roller into position after adjustment.

Adjust the roller by unlocking the grub screws (green arrows) and turn the allen bolt (blue arrow).

This moves the roller up and down.

Tighten the grub screws to secure the adjustment (green arrows).

Installing a pull handle



To install a pull handle.

Remove the top and bottom cover caps from the middle hinge near the flat handle.

Place the pull handle over the hinge.

Tighten the grub bolts.

Resetting a disengaged shoot bolt

On very rare occasions the locking mechanism has become disengaged from the shoot bolt. This is usually caused by trying to force the lock when the door is not closed in line with the tracks.



1. Unscrew the screws on the shoot bolt and the first couple of screws on the lock. Then slide the cover plate up.



2. Underneath you will see the 'teeth' on the main part of the locking system; this should have a slight bend on it (if not, this can be bent slightly).



3. Replace the top screw on the shoot bolt.

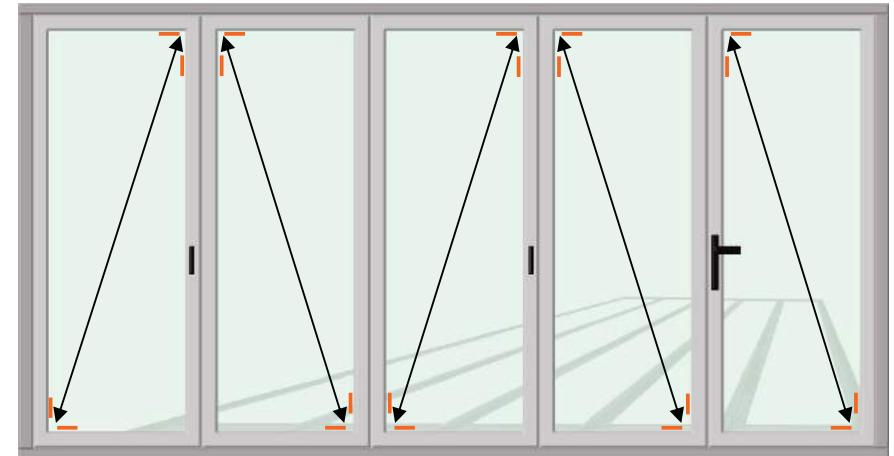


4. Ensure the shoot bolt is fully retracted and the lock is in the unlocked position before re-engaging the lock teeth into the shoot bolt.



5. Replace all screws in the lock

Toe & heeling glass



The — (orange line) indicates where the toe and heel packers are placed to allow the glass to lift the panels. The arrows indicate the brace direction. It is essential that the door glass is correctly toe and heeled as shown to ensure smooth operation of the doors when opening them.

Adjustable toe and heel device



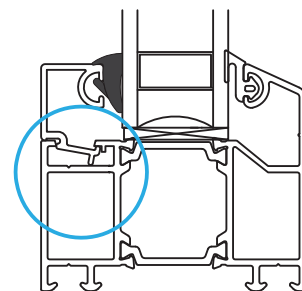
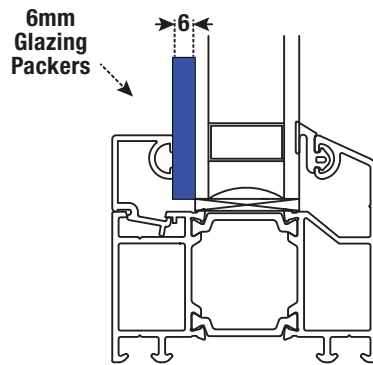
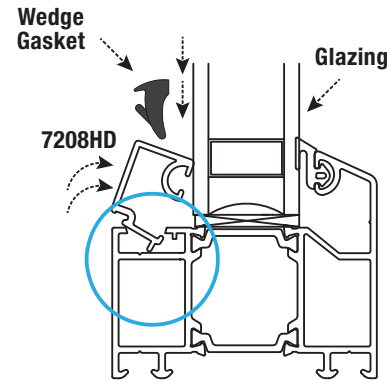
1. The locking panels on your Folding Sliding Doors are Pre-factory glazed & fitted with an adjustable toe and heel device.
2. In the top of each locking panel you will find a Pozi-Head screw bolt.
3. The doors panels will already be at their lowest point.
4. With the doors in the closed position, identify any panels that require lifting.
5. Open the doors so that you can get access to the adjustable toe and heel device at the top of the door panel
6. Pack the doors underneath the door (between the floor and door panel).
7. Wind the screw head clockwise, this will cause the corner of the door to rise.
8. Re-close the doors and check that they run parallel and evenly to the top and bottom tracks.
9. If they do not, then repeat as necessary.

How to glaze using a Wedge Gasket

The diagrams illustrate how to correctly insert glazing beads and the rubber 'wedge gasket' when supplied temporary glazed. Illustration captures the design modification to both the main frame profile and the glazing bead (April 2016).

Fitting the Beading

The glazing bead should be inserted into the main frame profile after positioning of the glass unit BUT before the wedge gasket is pushed into place.



Glazing Method Tip!

Place 6mm Packing Shims between the glazing bead and the glass unit to hold the glazing bead in position before pushing the wedge gasket into position, then remove the packing prior to completion.

NOTE: Care should be taken to ensure that the wedge gasket is inserted fully without any visible rippling.

Encapsulated Blinds

USER INSTRUCTIONS

Raising & lowering your Light Touch® blinds

Simply move the lower operator up-and-down to achieve the desired blind height, when resistance is felt STOP. A slight adjustment of the top operator allows for the tilt of the slats for light & privacy control.

Some units may only have one operator that combine both the tilt and lift action. Up & down to adjust blind height and a slight adjustment for the tilt action.

WHEN RAISING THE BLINDS - ENSURE SLATS ARE IN THE OPEN POSITION

CARE INSTRUCTIONS

Cleaning

For continued ease of operation, ensure that the glass surface (under the raise & lower operation) is kept clean. Foreign substances or residue can increase friction, thus requiring more force to operate.

TROUBLE SHOOTING

Re-alignment of Venetian Slats

Open the blinds, then raise the operator up and down to re-align.

Re-engaging the Operator(s)

Due to the nature of the magnetic design, dis-engagement of the raise & lower operator can occur by applying excessive force / by lifting the operator away from the surface of the glass / by moving the operator out of its designed track. This action may release the magnetic bond, thus causing the blind to temporarily malfunction. This occurrence is easy to correct.

To re-engage the Magnets and restore normal operation, simply lift the operator up, in its track, until the magnets re-engage. You will hear them connect.

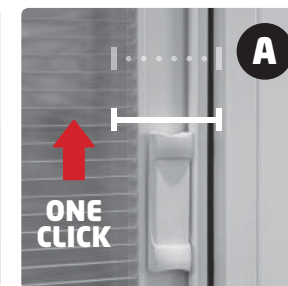
IMPORTANT: Some models use additional magnets and will require two magnet re-engagements. If you have a 2 or 3 magnet side operator (2 1/2" or 3" tall), one magnet click will restore operation - **SEE DIAGRAM A.**

If your blind uses a 4 magnet operator (3 1/2" tall), then a second engagement point (second magnet click) is required - **SEE DIAGRAM B.**

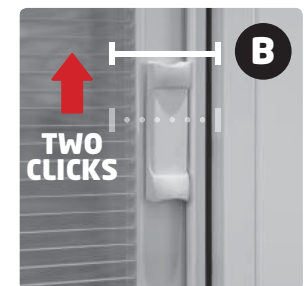
This second engagement is achieved by pushing the side operator up again past this first engagement point until you hear the second click. If all magnets within the operator, and inside the unit are not aligned, then full engagement will not be restored.



Two operators, top one for the tilt & close action and lower one to raise & lower the blinds.



Raise operator up in its track to achieve re-engagement **ONE CLICK.**



Where required push operator up further until you hear the **SECOND CLICK.**

Cleaning

Glass

External grime should be removed with a solution of soap and water. Any cleaner used should not be allowed to run down on any other surface. Any household glass cleaner may be used with a soft cloth.

NOTE: The glass used in most double glazed units, is easily scratched and it is therefore recommended that hand jewellery is removed prior to cleaning.

Panels & door frame

Wash frames and panels with soap and water solution at least:- Every three months in areas of heavy traffic, industry or located near the sea Every six months in rural areas. If required clean with a non-abrasive proprietary cleaner, suitable for either plastics, aluminium or timber, using a soft cloth. In the event of unusually heavy staining, advice should be sought from your supplier.

Any damage to the paint coating, such as scratches, chips or areas of abrasion, must be repaired immediately.

NOTE: Avoid all solvent based or abrasive cleaners. Take care not to disturb silicone pointing sealants.

Tracks

Tracks must remain clean and clear at all times. Dust and dirt can build up on the roller mechanism and foul the smooth running of the door. The tracks can be cleaned using a long bristle paint brush and vacuumed with a thin nozzle attachment.

Rollers

Every 3 to 6 months, thoroughly clean and dry all upper and lower rollers and all hinges. Liberally apply lubricant such as Teflon spray (no grease) on the wheels and bearings of the rollers. Oil all hinges including the hinge pin with light weight lubricating oil or Teflon spray.

General Maintenance

Glass scratches

If scratches occur, most can be removed with jewellers rouge available from your local glass supplier, or an equivalent rubbing compound. Alternatively, seek professional advice. Replacement of sealed units should be carried out by professionals in accordance with BS6262, the units complying with BS EN 1279.

PVCu profiles

PVCu requires no maintenance other than cleaning. In the event of damage, seek advice from your supplier. Periodically and where accessible, clear drainage holes which can be seen when you open the door.

Gaskets

If the gaskets are broken or damaged and draughts are felt around the unit, ensure prompt replacement by your supplier. Use a light soapy solution and a non-abrasive cloth.

DO NOT USE solvent based cleaning products on the gaskets. It is recommended that silicon spray is applied to the gaskets annually.

Hardware fittings

Every 3 to 6 months, thoroughly clean and dry all upper and lower rollers and all hinges. Liberally apply lubricant such as Teflon spray (no grease) on the wheels and bearings of the rollers. Oil all hinges including the hinge pin with light weight lubricating oil or Teflon spray, wipe away any excess with a non-abrasive cloth once you have finished.

Handles

No maintenance required for the door handles.

Silicone seals

NOTE: Some discolouration of the silicone pointing sealant is natural occurrence and cannot be avoided.

Condensation



Condensation is moisture-laden air converted into water. The atmosphere in which we live is generally invisible. The warmer the air is the more moisture it can hold, when its limit is reached and the warm air makes contact with a cold non absorbent surface, it becomes chilled and sheds the surplus moisture in the form of water droplets, usually on glass surface.

CAUSES & CURES

Living Room

- Allow the room's warmth to reach windows by positioning the curtains approximately 150mm from the glass.
- Where possible, avoid glazed or non-absorbent wall coating.
- Where flues have been blocked off, wall vents are most helpful.
- Vent holes below gas fires help to facilitate ventilation.
- Open windows for short periods each day to allow air change.

Bedroom

- The prime cause for condensation in the bedroom is not allowing for the night-time drop in outside temperature.
- Extend the central heating programme or other heating system according.
- Ventilate by opening the windows at least once a day to allow air change.

Kitchen

- Close door ways into the remainder of the house and keep a window open.
- Extractor fans etc, can help.



Timber Maintenance

Moisture content

The moisture content of timber changes constantly with variation in ambient temperature and relative humidity. As it does so, the cells in the timber swell or shrink to accommodate the changing moisture levels, producing a dimensional change in the timber section.

The degree of dimensional change varies with species and grade, but as a broad rule of thumb, in typical UK and Irish conditions, timber dimensions will vary by about 1% for every 3% change in timber moisture content.

Over a year, the equilibrium moisture content of exterior joinery can vary from under 15% in dry, summer conditions to over 20% in the wetter winter months. Since moisture contents as low as 10% are often found in workshops without humidity control, dimensional changes as large as 3 - 4% are quite possible when the joinery is delivered and fitted on site.

Temperature and humidity vary throughout the UK, warmer in the South, wetter in the West and colder to the North. This creates flexing of timber and over the seasons often causes premature failure in traditional solvent based coatings, particularly as they embrittle with ageing, and has been a significant factor in the switch to more flexible, water borne, protective coatings.

Maintenance guidelines

This note gives some basic guidelines on maintaining and redecorating factory finished windows, doors and exterior joinery. The information relates to water based paints, which dry quickly and with little smell. Applying them requires a different brushing technique (described overleaf) from traditional oil paint.

General Care

Teknos factory applied coatings systems will give many years of life between re painting cycles, and simple steps such as wiping down the joinery finish to remove dirt and insects will help extend the decorative finish. This can be done at the same time as cleaning the glass.

Good household maintenance also helps to extend repainting intervals, at least once a year:

- *Check hinges and handles and treat with a light oil if necessary*
- *Clean weather seals and ventilators to remove dust or grime*
- *In autumn, clear guttering and down pipes, and repair any leaks*
- *Each spring, inspect the joinery and spot repair any minor areas of coating damage, shakes or open joints.*

Repair products

The list below shows the typical maintenance products we recommend to maintain our factory finished doors. These are to be purchased through Teknos, all information is on www.teknos.co.uk.

Primers and Base Stains

Aqua Primer 2900 base stain

Anti Stain Aqua 2901 opaque primer

Top Coats

Aquatop 2600 translucent and opaque finish

Ancillaries

Teknoseal 4000 end grain sealer

Teknoseal 4001 break joint sealer

Teknofill 5001 fine surface filler

Typically 1 litre of primer or topcoat will cover a surface area of 8 - 10 square metres.

All the recommended Teknos products are water based, with VOC levels significantly below current and proposed legislative levels. Teknos does not use heavy metal additives in any of its products.

First and subsequent redecoration

All areas to be re coated should be lightly abraded with a fine grade abrasive paper, washed down with a mild detergent solution and rinsed with clean water to remove dust, insects and other contaminants, which can form a base for algae and fungi growth.

Using a good quality, long haired, synthetic brush, designed for use with acrylic paints, apply one or two coats of Aquatop 2600 opaque or translucent topcoat in the appropriate shade, colour and gloss level. Allow to dry for four hours between coats.

Timber Maintenance

Problem Areas

If regular maintenance is delayed or some other damage has occurred, additional steps may be necessary to reinstate the finish to its initial condition. The notes below cover the most common problems:

Where minor flaking affects small areas of the topcoat surface but the timber substrate is not exposed:

Abrade the damaged area with a fine grade abrasive paper to remove all unsound coating and feather out to leave a smooth surface. Clean down and wash the abraded area to remove dust, and allow to thoroughly dry. Apply a coat of Aquatop 2600 opaque or translucent topcoat in the appropriate shade, colour and gloss level to the damaged area. Allow to dry for four hours and then apply a second coat. If the damaged area is widespread, lightly abrade the complete frame; repair the damaged area as described above; apply the second coat to the complete frame.

Where moisture has penetrated joints, end grain, mitres or natural movement of the timber has opened shakes, treat as follows:

Abrade the damaged area with a fine grade abrasive paper to remove all unsound coating and feather out to leave a smooth surface. Clean down and wash the abraded area to remove dust, and allow to thoroughly dry.

Prime with Aqua Primer 2900 base coat stain in the original colour for translucent systems or Anti Stain Aqua 2901 for opaque systems.

Seal any open joints with Teknoseal 4001 joint sealer applied by mastic gun. Wipe with a damp cloth or spatula to give a smooth joint and allow to dry to a clear finish.

Seal any exposed end grain with Teknoseal 4000 end grain sealer and allow to thoroughly dry. Apply a coat of Aquatop 2600 opaque or translucent topcoat in the appropriate shade, colour and gloss level. Allow to dry for four hours and then apply a second coat.

Resin Exudation

Resin occurs naturally in timber, in pockets within the wood or associated with knots. Some timber species are naturally more resinous than others, but the presence of resin is normally not detectable when joinery is manufactured.

Resin exudation often occurs on southern elevations and on darker coloured joinery where the sun's heat liquifies and mobilises the resin drawing it to the surface.

Where resin has exuded through the coating:

Although it may be unsightly, it is better not to remove fresh sticky resin. In practice, this can be very difficult, and its presence indicates that the exudation is still continuing. Remedial work is often best left until the first maintenance period, by which time the resin has normally fully crystallised. The best remedial treatment is to allow it to weather until it dries and oxidises, forming a white crystalline powder. The dried resin can then be removed with a stiff nylon or natural bristle brush, and any remaining residues washed off with a cloth.

Water based coatings often allow the passage of resin to the surface without damaging the coating. If the finish is not damaged, by over-vigorous scrubbing during crystal removal, re-coating is often unnecessary, but otherwise an overall application of a finish coat restores the general appearance of the timber and maintains its protection.

Applying water based paints

The short drying time and reduced flow of water based paints requires a different technique to achieve a good finish. Following a few simple hints will produce excellent results.

The quality of the brush is very important; a long haired synthetic brush will give the best results. Avoid short haired or worn brushes which may leave lines in the dry film. Thoroughly wet the brush with water before starting, ensuring the base of the bristles (the heel of the brush) is fully wetted.

Timber Maintenance

The viscosity of the paint will affect the ease of application. Whilst the product can be applied directly from the tin, additional thinning with between 5 and 10% of water will improve the flow and levelling properties of the product, particularly in warmer weather.

For best results follow three simple steps:

- Load the coating generously onto the surface and disperse the paint briskly
- Even out the coating with light diagonal cross strokes, do not over brush, the coating will flow and level naturally
- Finish the application with light brush strokes in the direction of the grain

With practice an even coat can be applied quickly. An even coating film is important for durability, but also for appearance, particularly in the case of translucent wood stain.

Apply and finish each section systematically. So on a door or window paint one component at a time e.g. top rail followed by the style and then the bottom rail. When applying darker opaque colours over previously applied lighter shades use a base coat of the final colour or one coat of Anti Stain aqua 2901 Grey to aid opacity.

Do not attempt to paint when the temperature is below 5 degrees Celsius, or if the relative humidity exceeds 80%: the curing and performance of the coating may be impaired. If there is any doubt about the substrate or underlying paint film, apply the appropriate Teknos products to a small, inconspicuous area, allow to dry for 24 hours and then inspect for appearance and adhesion to substrate.

Oak exterior joinery

Oak has a high natural tannic acid content which causes the timber to turn black when exposed to moisture containing trace amounts of iron. As a result external oak joinery needs more frequent care and maintenance than most other species, particularly early in its service life, to maintain its decorative appearance.

Oak is a popular and durable timber for exterior joinery applications but it;

- flexes and moves with changes in ambient humidity, putting stress on the structure and causing joints to open
- has a tendency to surface check (split) when externally exposed
- discolours in sunlight, typically to a dull greyish colour

Maintaining Oak

Oak naturally greys and discolours in sunlight regardless of the coating system applied or how much 'UV protection' the coating claims to offer. A light tint in the coating helps to disguise this "greying" and mask the patchy appearance which can be evident in the early stages as the sunlight bleaches the timber surface.

Regular washing down, with a mild detergent solution timber, when the windows are cleaned will help to remove surface contaminants and at the same time we recommend all external joints, gaps and end grain are inspected and any defects repaired.

Open joints and gaps

If joints have opened, reseal them using Teknoseal 4001 and Teknoseal 4000 break joint and end grain sealers and if surface splits have opened patch repair the protective coating with the appropriate topcoat. After treatment apply a full coat of Aquatop 2600 in the original translucent shade.



The natural movement of Oak can cause joints to open allowing water to enter, react with tannic acid in the timber causing characteristic staining

Timber Maintenance

Following this regular maintenance regime, particularly early in the service life of the joinery, will help maintain Oak's decorative appearance and reduce the need for more time consuming maintenance at a later stage.

Removing discolouration

The discolouration is typical of that caused by moisture reacting with the natural acidic tannins in the oak surface and occurs where the protective coating is mechanically disrupted either by joints opening, the surface splitting, or warping or twisting of the wood section. Though not a sign of rot, it is visually unappealing but can be treated and repaired by removing the coating and top surface of the timber.



Localised staining can be sanded out using a detail sander and the coating system reinstated

A mains powered detailed sander, is the quickest and most consistent method of removing the affected layer. Feather back the sanded area into the surrounding unaffected area then reinstate the coating system in line with our Guidelines.

Chemical removal of discolouration

If staining is extensive, the black colour can be removed using a solution of Oxalic acid. This treatment will return the Oak surface to an even tone similar to its original colour and the protective finish can then be reapplied once any remedial work on joints etc has been completed.

Before treatment, remove the protective coating from the affected timber. This is best done with a detail sander using a coarse, then fine, grit pad. Oxalic acid (a natural extract of Rhubarb leaves) is supplied as dry crystals and is available from most hardware stores or on the internet.

To treat discoloured Oak, make up a saturated solution of the crystals in a plastic bucket using approximately 4 tablespoons of Oxalic acid crystals to 1 pint of hot water. Some undissolved crystals in the bottom of the container after mixing, show the solution is saturated. Allow the solution to cool to room temperature.

Apply the Oxalic Acid solution evenly over the entire surface with a sponge or brush. Avoid spot treating which can cause an uneven patchy appearance.

Leave the solution on the surface for 10-20 minutes then wash off with clean water. If staining still remains, apply more solution and repeat until desired even colour is obtained. To stop the bleaching action rinse the surface with clean water and wipe down with dry cloths. Several water rinses and wipe downs will remove most of the Oxalic acid. To fully neutralise, rinse with an alkaline solution (a heaped tablespoon of baking soda in 2 pints of water will do the job) leave for 5 minutes then rinse off the baking soda solution with fresh water.

These treatments will raise the grain of the wood, so let dry thoroughly (at least overnight) before sanding down the raised grain with a fine grade sanding pad. Finally, repair any defects in the joinery, and reinstate the protective coating system, remembering to reseal all joints and end grain as detailed in our Guidelines.



The surface of Oak joinery tends to split in service, disrupting the protective coating, allowing water to enter and react with tannic acid

Note: No remedial work should be undertaken until the joinery has been allowed to dry out (with moisture content below 16%) and climatic conditions are suitable for redecoration.

Guide: viewing glass



Double glazing provides a high standard of vision. The following is a guide to the quality that can be expected.

Transparent glass used in the manufacture of insulating glass is identical to that used traditionally for single glass and will, therefore, have a similar level of quality.

How to do a professional check

Stand in the room no less than 2 metres away from the panes and look directly through them. For toughened, laminated or coated glasses, stand no less than 3 metres away. Do so in natural daylight, but not looking directly towards the sun and with no visible moisture on the surface of the glass. Where it is not possible to stand at the required distance, then stand as far away as you can from the panes. Exclude from the check the 50mm wide band around the edge of the glass.

What to expect

Flat transparent glass, including laminated or toughened (tempered) or coated glass is acceptable if the following are neither obtrusive nor bunched:

- *bubbles or blisters*
- *hairlines or blobs*
- *fine scratches under 25mm long*
- *minute particles*

The obtrusiveness of blemishes is judged by looking through the glass, not at it, under natural light. It must be understood that the glass used in double glazing is not ground optically flat, and so as a consequence, blemishes are a possibility.

Special glasses

Toughened glass may show visual distortions which are accentuated by reflections in double glazing. Such surface colourations and patterns do not indicate a change in physical performance. Laminated glass may have a few more blemishes due to it being made of several layers.

As a legal requirement, glass intended for use as a safety glass must display a permanent safety mark which is applied before installation, but remains visible after installation.

The mark must comply with the requirements of the British Standard BS6206 Specification for Impact Performance Requirements for Flat Safety Glass and Safety Plastics for Use in Buildings, or its successor.

As a legal requirement, glass intended for use as a safety glass must display a permanent safety mark which is applied before installation, but remains visible after installation. The mark must comply with the requirements of the British Standard BS6206

Specification for Impact Performance Requirements for Flat Safety Glass and Safety Plastics for Use in Buildings, or its successor.

Double reflection

This occurs in certain light conditions. It is caused by multiple surface reflections in double glazing which may vary from pane to pane. Brewster's Fringes - the rainbow effect. Small transitory rainbow effects are sometimes produced by the glass deflecting light.

Their appearance is due to high quality flat glass sheets being placed parallel to each other.

Patterned glass

The above does not apply to patterned glass as its manufacturing process is different.

25 Year Guarantee

Warranty Terms and Conditions

Folding Sliding Doors Limited warrants to the original purchaser that all of its products shall be free from defects in material or workmanship for the periods specified below. This warranty applies to the products under normal use, subject to the conditions herein, and as determined by Folding Sliding Doors Limited in its sole discretion. This warranty does not cover damages attributable to improper installation, incorrectly installed damp proof membranes and drainage or the omission of, inadequate maintenance, improper product use, after market product modifications, normal weathering, highly corrosive environments, damages caused by fire, accident, flood, acts of God, vandalism, building settlement or structure failures, or other occurrences beyond Folding Sliding Doors Limited's control. Folding Sliding Doors Limited makes no representation, warranty or guarantee, express or implied, as to the performance of its products in a tropical storm or hurricane. Folding Sliding Doors Limited's products were tested in accordance with European conformity requirements. Folding Sliding Doors Limited's liability under this warranty is limited to repair, replacement or refund as determined by Folding Sliding Doors Limited in its sole discretion and does not include removal or installation of replacements. Decisions as to whether to repair, replace or refund will be made by Folding Sliding Doors Limited in its sole discretion. Replacement parts provided will be the closest equivalent product available. The warranty will not be extended by supplying replacement parts.

Structural Integrity of Aluminium Doors

The powder coated aluminium panels and framing members shall be free from defects in material or workmanship and maintain their structural integrity and form for a period of twenty five (25) years following delivery.

Structural Integrity of Timber Doors

The factory painted timber panels and framing members shall be free from defects in workmanship and maintain their structural integrity and form for a period of twenty five (25) years following delivery. Clear finished products are excluded. The non factory painted timber panels and framing members shall be free from defects in workmanship and maintain their structural integrity and form for a period of five (5) years following delivery. Weathering, expansion and exterior deterioration of timber surfaces in this instance are not covered under the terms of the warranty. Clear finished products are included.

Laminated Glass

Folding Sliding Doors Limited warrants that for a period of five (5) years from delivery under normal conditions of use, that the products shall be free of defects resulting in material edge separation or obstruction of vision from delaminating.

Folding Sliding Doors Limited warrants that the sealed glass component of insulated glass shall be free of defects resulting in material obstruction of vision or film formation caused by dust or moisture on the internal surface of a sealed unit for a period of ten (10) years following delivery. Imperfections such as scratches or reflected distortions from a tempering or heat strengthening process are to be expected and are not covered under this warranty. Broken glass is not covered under this warranty.

Hardware

For products originally installed in a single family residence, Folding Sliding Doors Limited warrants that for a period of ten (10) years following delivery that the mechanical operation of hardware components will be free from mechanical defect (installation excluded). For products originally installed in non-single family residential applications, Folding Sliding Doors Limited warrants that for a period of three (3) years following delivery that the mechanical operation of hardware components will be free from mechanical defect. For products installed within three (3) miles of bodies of salt water the warranty period is one (1) year. Coatings on movable or handled hardware are not covered under this warranty.

Paint Finish

Factory sprayed wood finish - Folding Sliding Doors Limited warrants that for a period of five (5) years following delivery that the finish will not peel, crack or blister. For products installed within three (3) miles of bodies of salt water the warranty period is two (2) years. Maintenance of factory sprayed wood finishes must follow Folding Sliding Doors Limited's simple maintenance procedure of regularly washing the profile with warm soapy water. Clear finished products are excluded. Powder coated paint finishes - Folding Sliding Doors Limited warrants that for a period of ten (10) years following delivery that the paint finish will not blister or peel. For products installed within three (3) miles of bodies of salt water the warranty period is three (3) years. Note that as powder coat is a commercial finish, it is typical for powder coated finishes to have an orange peel appearance, speckles, bubbles, craters, pinholes and processing marks that occur during manufacturing. These are not considered defects or covered under the warranty unless they are visible from three (3) metres. Maintenance of powder coated finishes must follow Folding Sliding Doors Limited's simple maintenance procedure of regularly washing the profile with warm soapy water. Anodized finishes - Folding Sliding Doors Limited will warrant the Class 1 clear anodized finish against cracking, crazing, flaking or blistering for five (5) years from date of delivery. Note that it is typical for anodized finishes to have colour variation and dye and processing marks that occur during manufacturing. These are not considered defects or covered under the warranty. Maintenance of clear anodized finishes must follow Folding Sliding Doors Limited's simple maintenance procedure of regularly washing the profile with warm soapy water.

General Terms

The warranty registration form must be fully completed and received at our address (Folding Sliding Doors Limited, Works, Hobbins Avenue, West Bowling, Bradford, West Yorkshire, BD5 8ER) within twenty eight (28) days of the products being delivered. The warranty will only be valid providing that no modification, repair or alteration to the product has been made without Folding Sliding Doors Limited's written approval by a senior member of staff. All defective parts must be returned to Folding Sliding Doors Limited. Folding Sliding Doors Limited reserves the right to charge for replacement parts by way of a deposit until the defective parts are received. Folding Sliding Doors Limited will reimburse the deposit payment in the event of receipt of defective part and inspection determines the warranty is valid. Folding Sliding Doors Limited's liability under this warranty is limited to replacement of parts only, the warranty does not include repair, removal or installation of replacement parts. Except in the instance where Folding Sliding Doors Limited products have been installed by a Folding Sliding Doors Limited's approved and trained third party installer. Folding Sliding Doors Limited's liability under this warranty does not include the installation of small replacement parts that can be mailed in a padded envelope and easily installed by the buyer as determined by Folding Sliding Doors Limited in its sole discretion. Folding Sliding Doors Limited will only warranty the correct operation of the product if it has been installed by a registered third party installer. Approved and trained by Folding Sliding Doors Limited. This warranty is fully transferable should the property be sold, providing that Folding Sliding Doors Limited is informed, in writing, by the original purchaser and the new owner registers the warranty.

Terms for £1000 Security Warranty

The security warranty will be valid for a period of five (5) years from the date of registration. The warranty will only take effect from the date of receipt of the registration form. The total compensation package of up to £1000 (one thousand) will be the maximum amount payable in full and final settlement of any claims. Windows and doors must be securely closed (not in night vent position) and locked with the keys provided. The security warranty covers the frames and hardware from forced entry. This is not a warranty on the glass or key locking cylinders, no payment will be issued in cases where entry has been made by breaking the glass or key locking cylinder attack. In the event of a break-in where a Folding Sliding Doors Limited product is forced open, you must contact your installer/dealer with full details with photographs and a police crime incident number. If on investigation, it is found that the Folding Sliding Doors Limited products were correctly installed, adjusted and maintained, but failed during the break-in, we will then issue the relevant payment. This will be made in two parts; (i) £500 (five hundred) to the registered claimant and (ii) up to £500 (five hundred) towards the cost of replacement or repair of damage to the product caused by the break-in. One claim per household can be made during the warranty period and notification of any claim must be made within twenty eight (28) days of the break-in.

Terms for 10 Year Manufacturer Warranty

The manufacturer Warranty will be valid for the duration of the installer/dealer warranty (for a maximum of ten (10) years), however, customers must return the registration form within the twenty eight (28) days stated to benefit from the additional cover. Should the installer/dealer be unable to fulfil the warranty offered, for reasons such as ceasing trading, then Folding Sliding Doors Limited (the manufacturer) will guarantee all its products for the remainder of the term for a maximum of twenty five (25) years. This includes frames and hardware, it does not cover fitting, glass, building works, electrics, plumbing, flooring, ancillary items or any other products or services your dealer has provided other than the products Folding Sliding Doors Limited have manufactured. Should any dispute arise with regards to the installer/dealer warranty, and the execution of this, where the installer/dealer is still in a position to comply with the terms originally set out, then Folding Sliding Doors Limited is not in a position to arbitrate or carry out any works required.

CLAIMS PROCEDURE

To make a claim under this warranty, the buyer should contact the seller from whom the product was purchased within twenty eight (28) days after the discovery of the defect. The claimant will provide the seller with (i) a full description of the defect, (ii) photographs of the defective part, (iii) the defective part for replacement. If the buyer has not received a satisfactory response from the seller, you must then notify Folding Sliding Doors Ltd, Customer Service Department, FSD Works, Hobbins Avenue, West Bowling, Bradford, West Yorkshire, BD5 8ER. The claim should identify the invoice number, product type, date product was installed and the defect.

General Provisions

THERE ARE NO OTHER WARRANTIES EXCEPT AS STATED HEREIN. ANY WARRANTIES OF MERCHANTABILITY OR FITNESS FOR A PARTICULAR PURPOSE ARE LIMITED TO THE DURATION OF WARRANTY COVERAGE OF THESE EXPRESS WRITTEN WARRANTIES. FOLDING SLIDING DOORS LIMITED IS NOT RESPONSIBLE FOR ANY INCIDENTAL OR CONSEQUENTIAL DAMAGE, LOSS OR INJURY TO PERSONS OR PROPERTY. THIS WARRANTY DOES NOT CONFER ANY RIGHTS OTHER THAN THOSE EXPRESSLY SET OUT ABOVE AND DOES NOT COVER ANY CLAIMS FOR CONSEQUENTIAL LOSS OR DAMAGE. THIS WARRANTY IS OFFERED AS AN EXTRA BENEFIT AND DOES NOT AFFECT YOUR STATUTORY RIGHTS AS A CONSUMER.