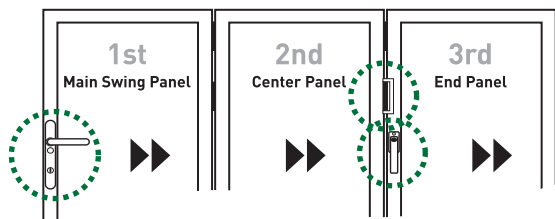
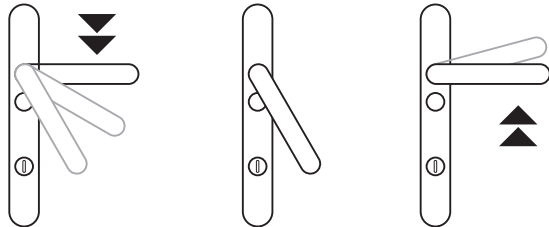


## HOW TO OPERATE YOUR BI-FOLD DOOR (RIGHT HAND STACKING OUTWARD OPENING)

**\*\*IMPORTANT: REMOVE KEYS PRIOR TO FOLDING OPEN\*\***

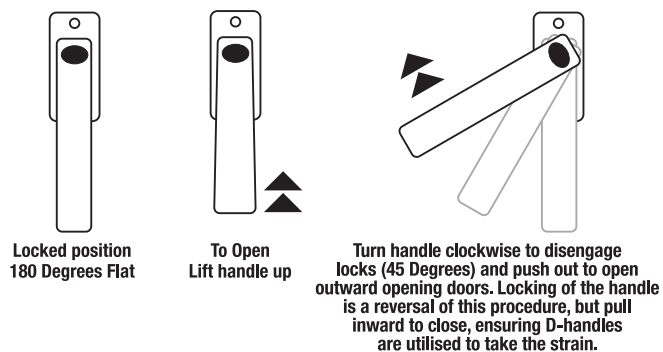


### HOW TO OPERATE YOUR LEVER HANDLE



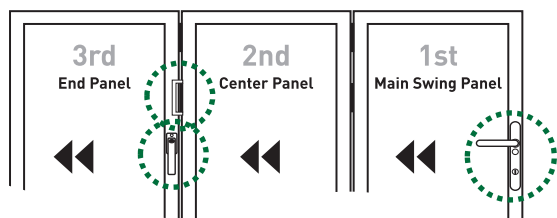
- 1. To Open**  
Use key, depress handle to dis-engage locks
- 2. To Open**  
Keep handle depressed Push to outward open
- 3. Lock(ing) position**  
Lift handle slightly to engage locks, use key

### HOW TO OPERATE YOUR BI-FOLD HANDLE

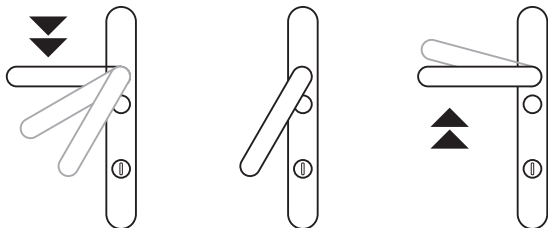


## HOW TO OPERATE YOUR BI-FOLD DOOR (LEFT HAND STACKING OUTWARD OPENING)

**\*\*IMPORTANT: REMOVE KEYS PRIOR TO FOLDING OPEN\*\***

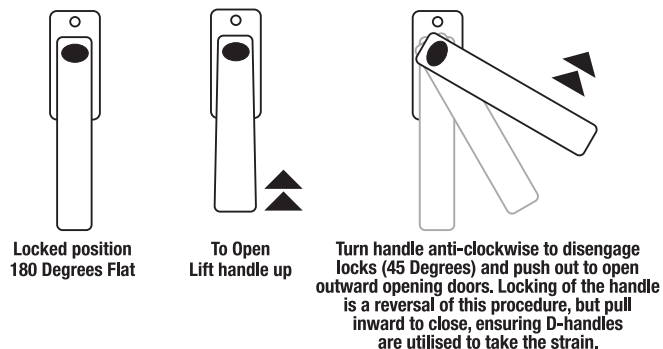


### HOW TO OPERATE YOUR LEVER HANDLE



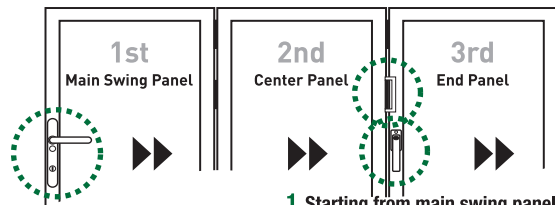
- 1. To Open**  
Use key, depress handle to dis-engage locks
- 2. To Open**  
Keep handle depressed Push to outward open
- 3. Lock(ing) position**  
Lift handle slightly to engage locks, use key

### HOW TO OPERATE YOUR BI-FOLD HANDLE

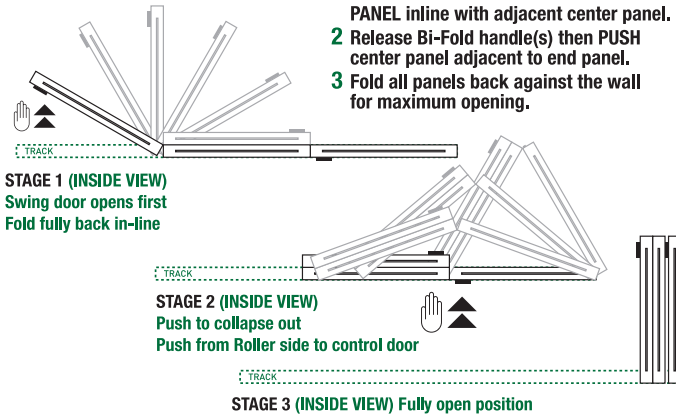


## HOW TO OPERATE YOUR BI-FOLD DOOR (RIGHT HAND STACKING OUTWARD OPENING)

**\*\*IMPORTANT: REMOVE KEYS PRIOR TO FOLDING OPEN\*\***

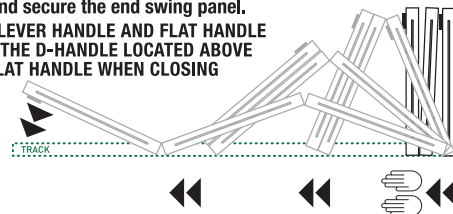


- Starting from main swing panel, OPERATE lever handle then outward open MAIN SWING PANEL inline with adjacent center panel.
- Release Bi-Fold handle(s) then PUSH center panel adjacent to end panel.
- Fold all panels back against the wall for maximum opening.



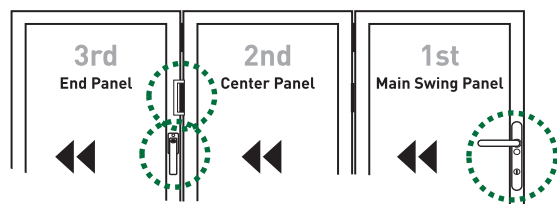
### HOW TO CLOSE YOUR BI-FOLD DOOR

- Hold panels 2 & 3 and walk in the direction of the track
- The rollers are utilised giving a smooth closure to the bi-fold door
- Close and secure the end swing panel.  
LOCK BOTH LEVER HANDLE AND FLAT HANDLE UTILISING THE D-HANDLE LOCATED ABOVE THE FLAT HANDLE WHEN CLOSING

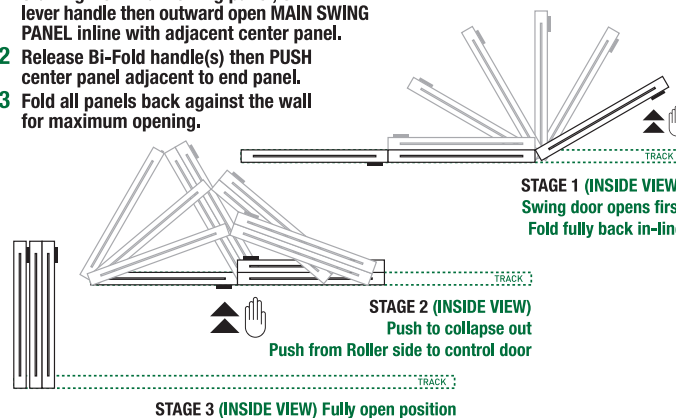


## HOW TO OPERATE YOUR BI-FOLD DOOR (LEFT HAND STACKING OUTWARD OPENING)

**\*\*IMPORTANT: REMOVE KEYS PRIOR TO FOLDING OPEN\*\***



- Starting from main swing panel, OPERATE lever handle then outward open MAIN SWING PANEL inline with adjacent center panel.
- Release Bi-Fold handle(s) then PUSH center panel adjacent to end panel.
- Fold all panels back against the wall for maximum opening.



### HOW TO CLOSE YOUR BI-FOLD DOOR

- Hold panels 2 & 3 and walk in the direction of the track
- The rollers are utilised giving a smooth closure to the bi-fold door
- Close and secure the end swing panel.  
LOCK BOTH LEVER HANDLE AND FLAT HANDLE UTILISING THE D-HANDLE LOCATED ABOVE THE FLAT HANDLE WHEN CLOSING

